





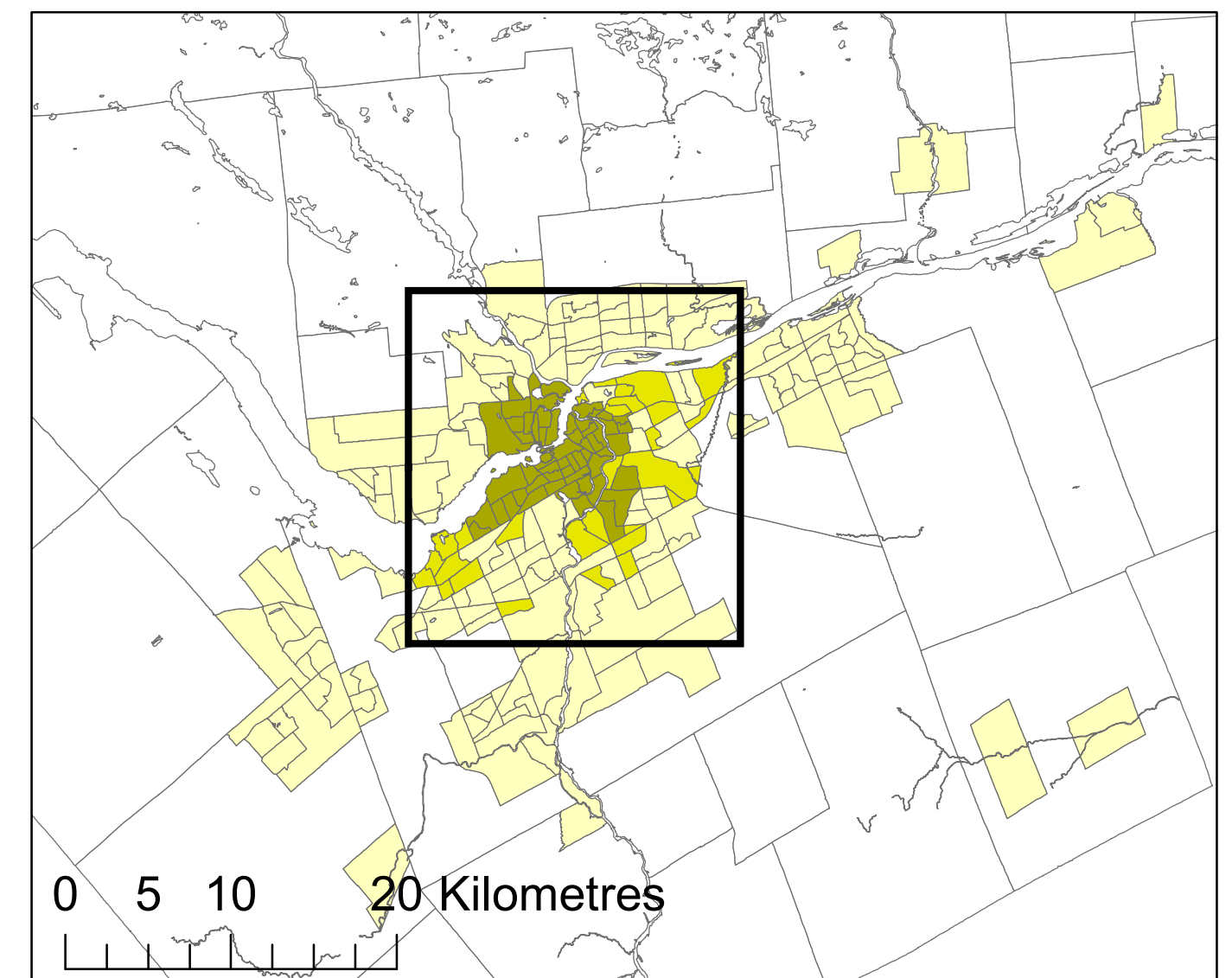
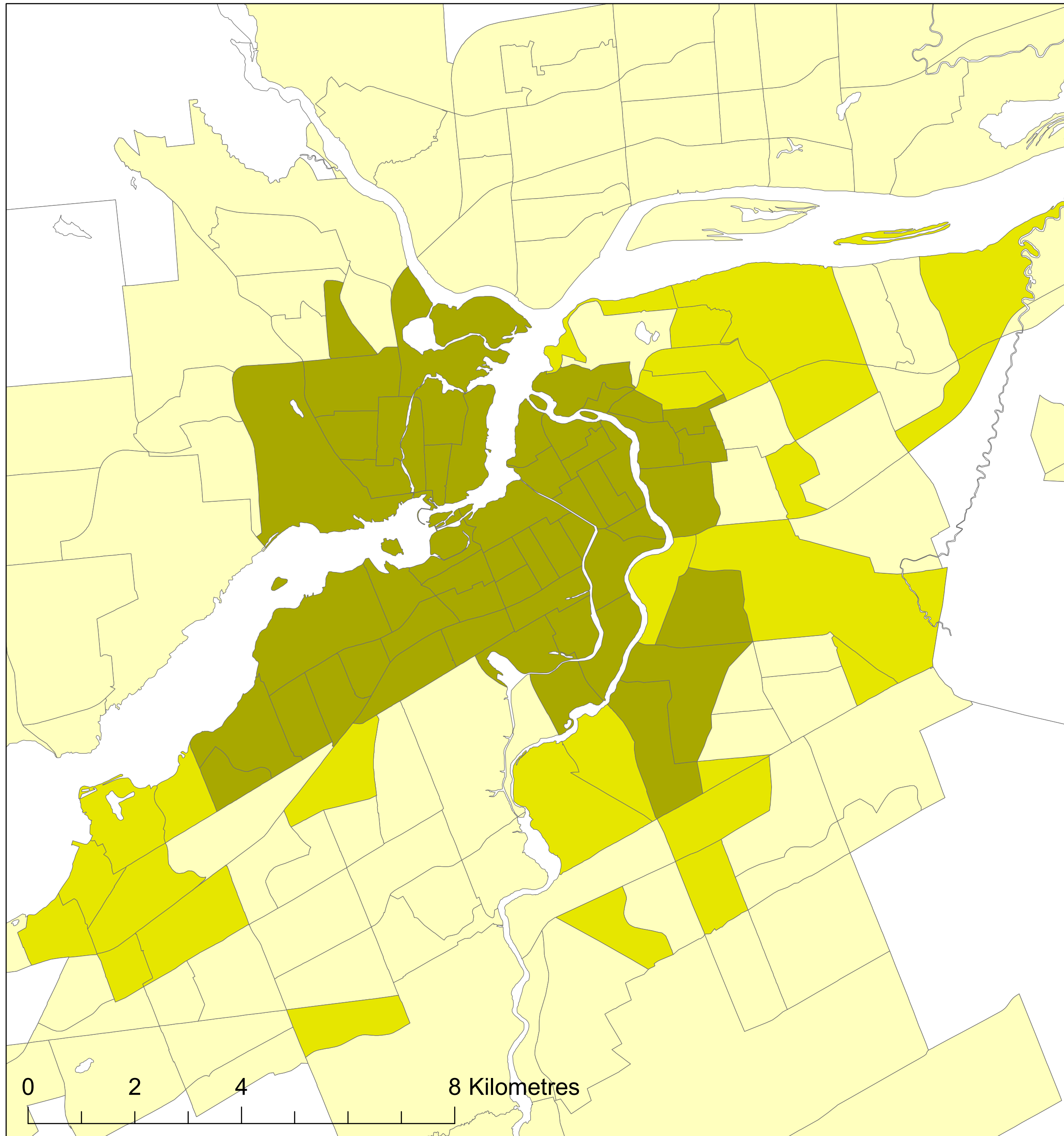
# Ottawa-Gatineau

*Transportation T9 Method*

## Legend

	Active Core	Active Core: 15%
	Transit Suburb	Transit Suburb: 9%
	Auto Suburb	Auto Suburb: 62%
	Exurban	Exurban: 14%

Census Tracts and Population Data: 2016 Census  
Census Tract Classification: 2016



Queen's School of Urban and Regional Planning  
Principal Investigator: David Gordon  
Research Assistants: Lyra Hindrichs, Chris Willms &  
Emily Goldney

