

Vancouver

Active Core 16%, Suburban 81%, Exurban 3%

Density Method D4

Statistics Canada | 2006 Census

Mark Janzen, Research Assistant

Legend

Active Core

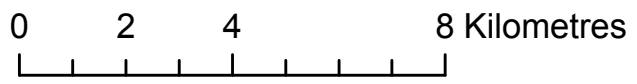
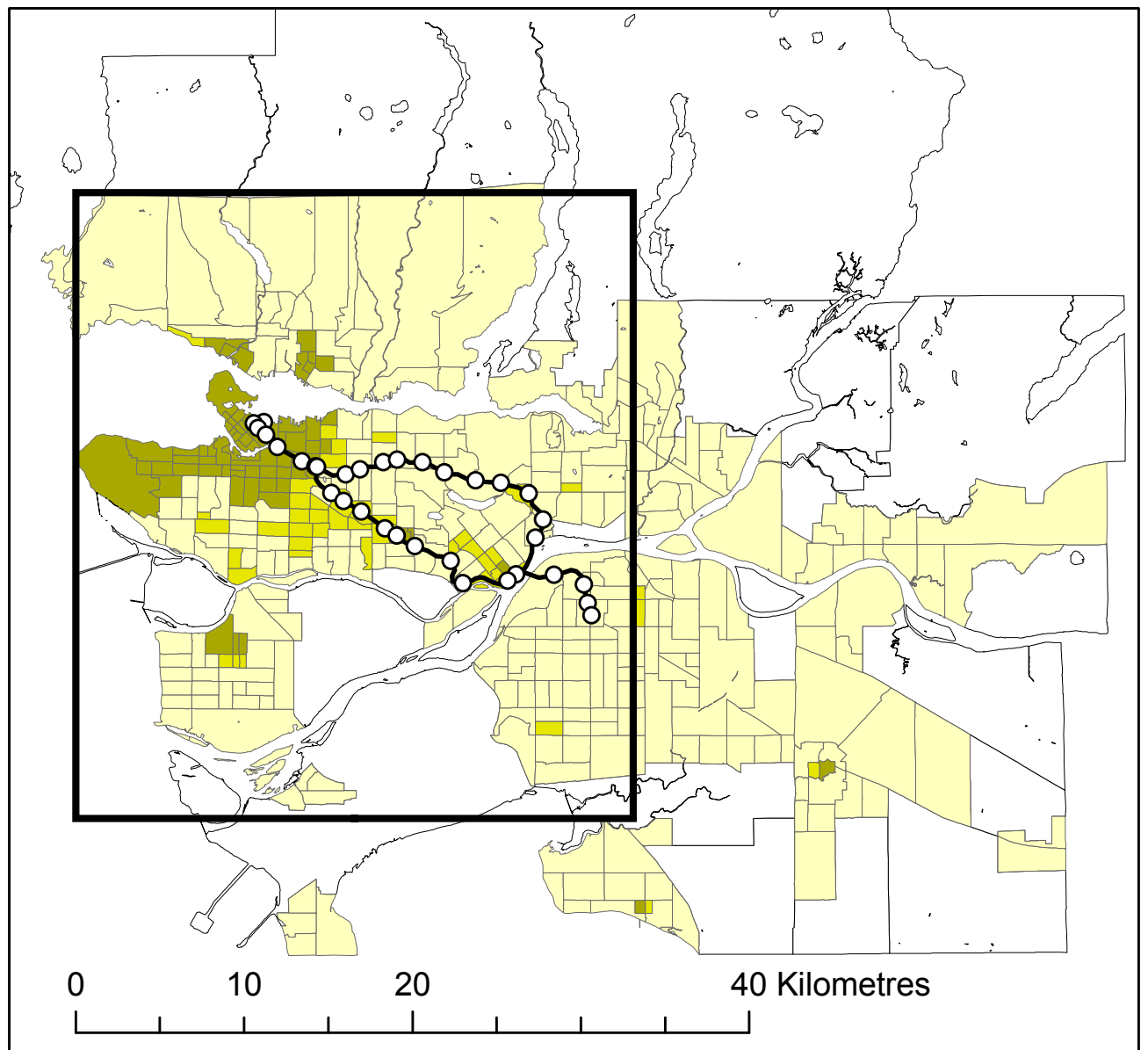
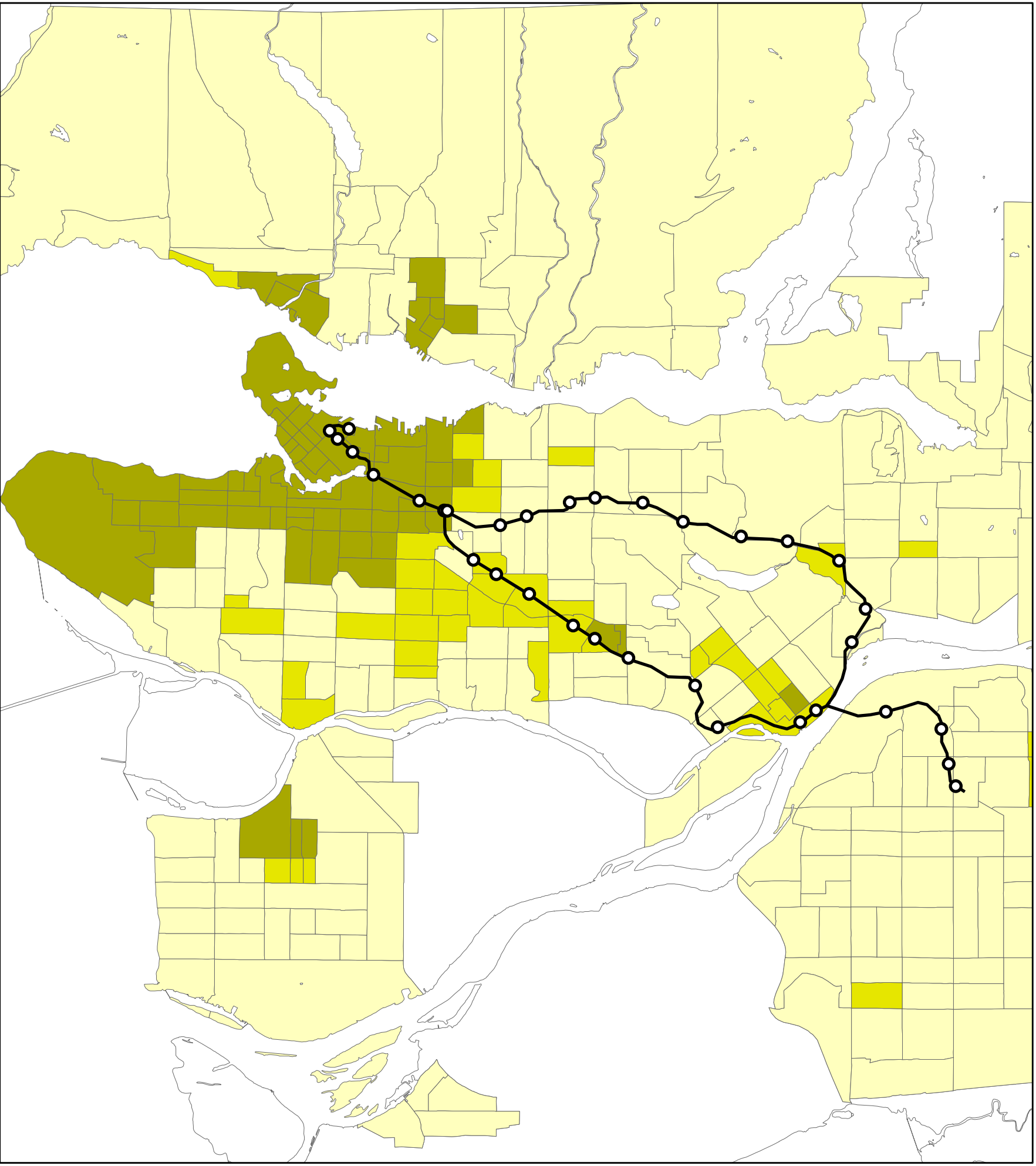
Transit Supportive Suburb

Auto Suburb

Exurban

Sky Train Stations

Skytrain Line



Queen's University School of Urban and Regional Planning.
Principal Investigator David Gordon

