

Calgary

14% Core, 81% Suburb, 5% Exurban

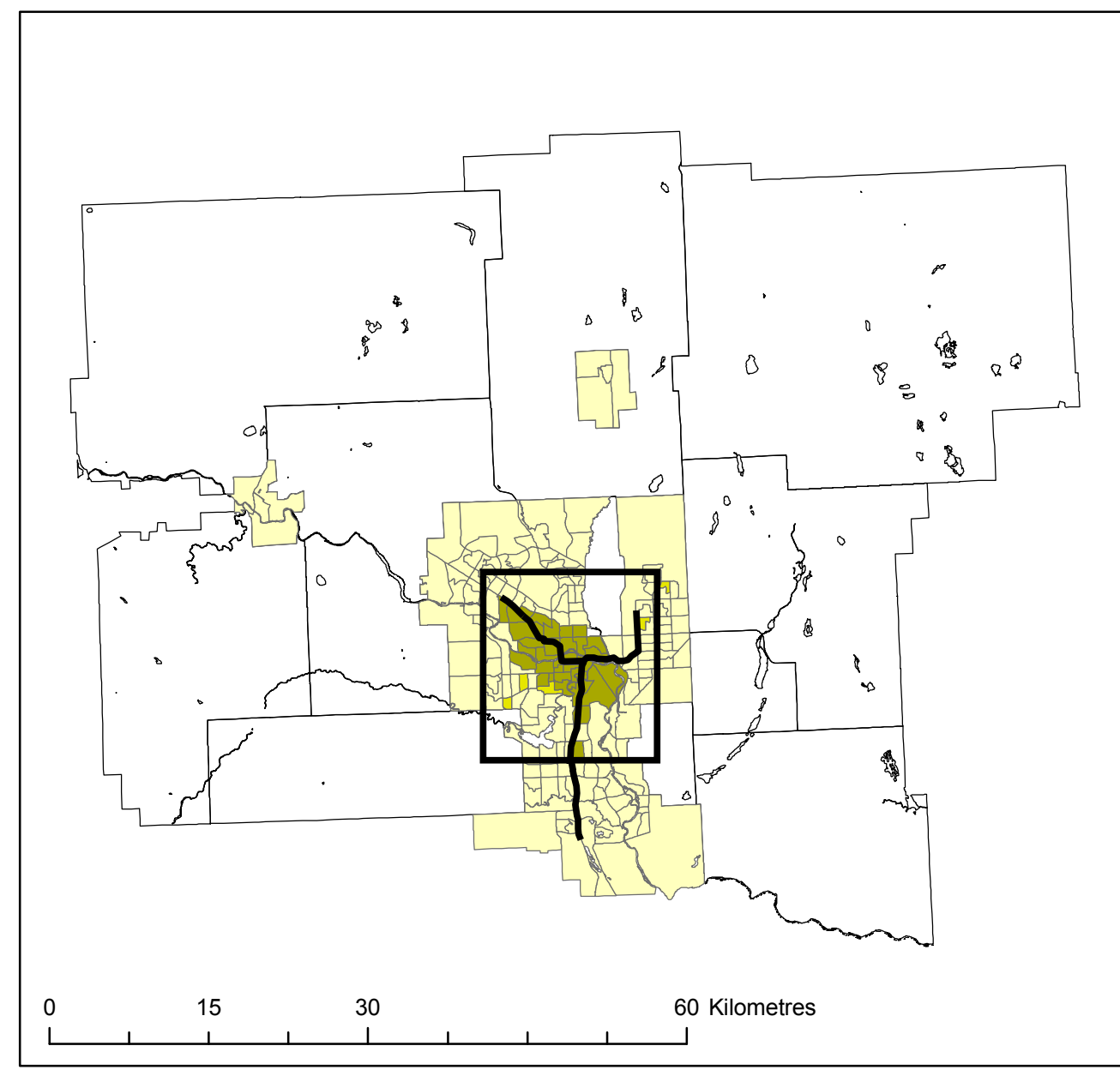
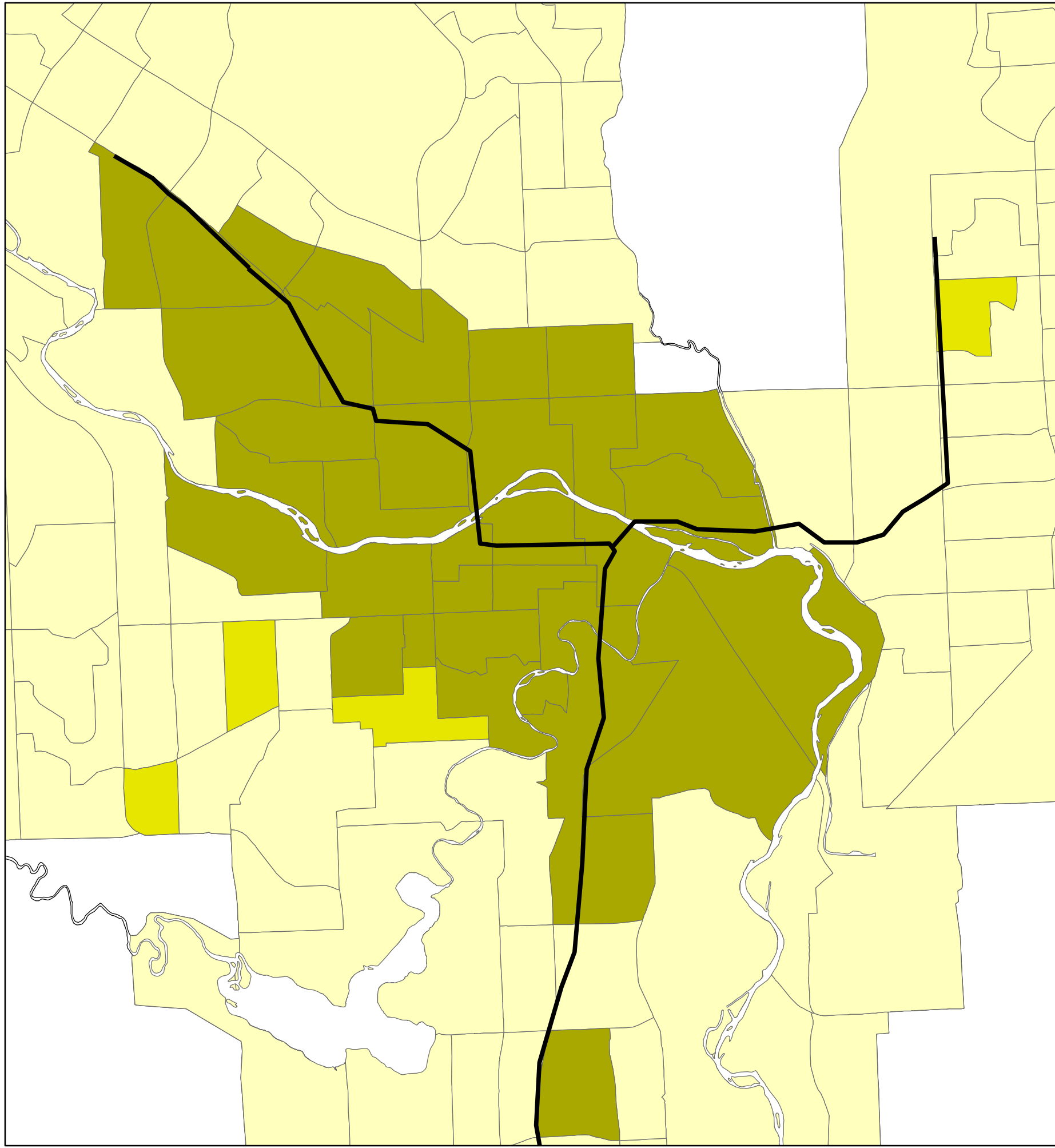
Density Method D4

Statistics Canada | 2006 Census

Thierry Pereira, Research Assistant

Legend

- Active Core
- Transit Supportive Suburb
- Auto Suburb
- Exurban
- LRT 2006



Queen's University, School of Urban and Regional Planning
Principal Investigator David Gordon

