

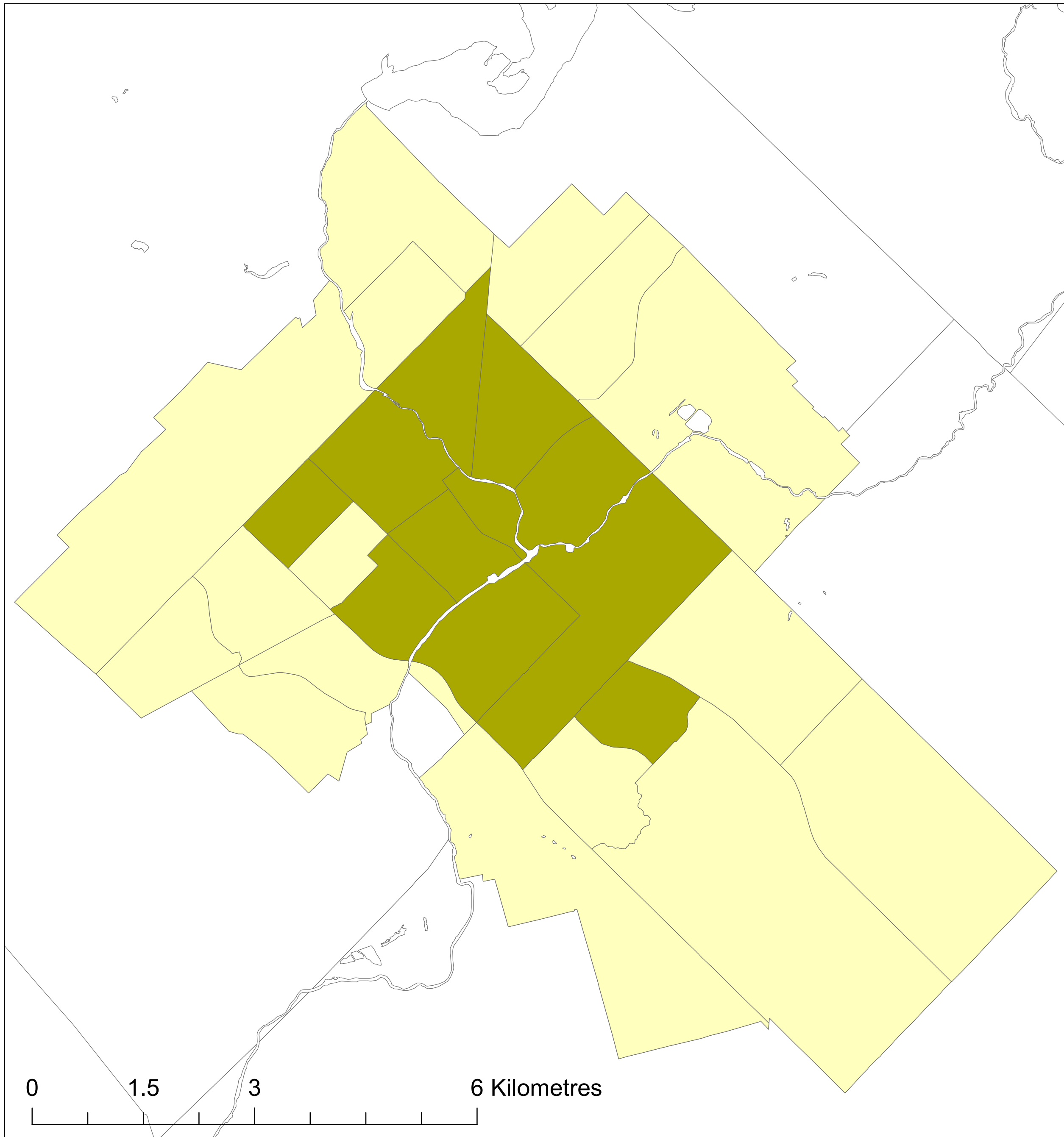
Guelph

Transportation T9 Method

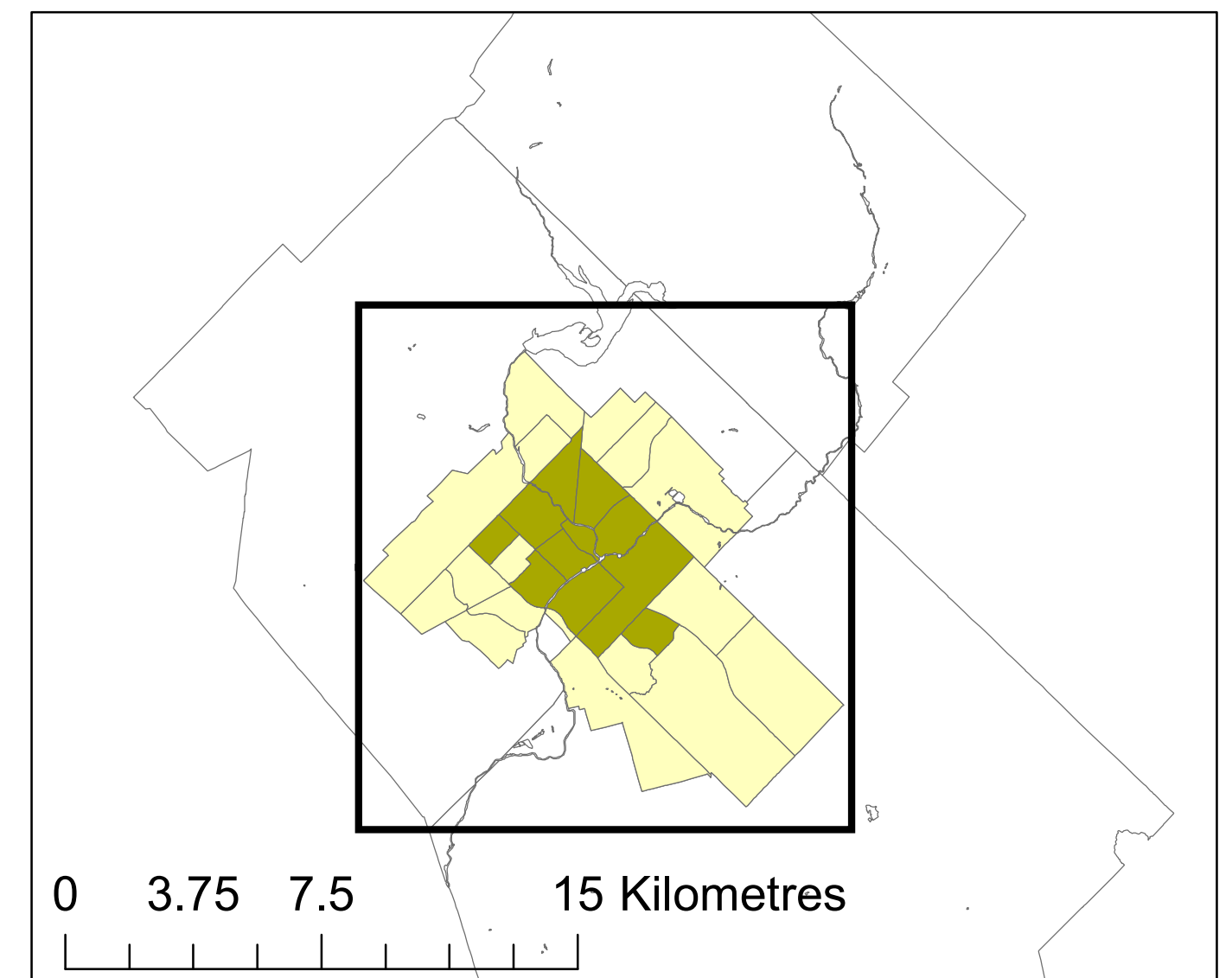
Legend

- Active Core
- Auto Suburb
- Exurban

Active Core: 27%
Auto Suburb: 60%
Exurban: 13%



Census Tracts and Population Data: 2016 Census
Census Tract Classification: 2016



Queen's School of Urban and Regional Planning
Principal Investigator: David Gordon
Research Assistants: Lyra Hindrichs, Chris Wilms,
Ben McCauley & Shuhong Lin

