

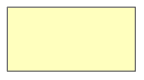




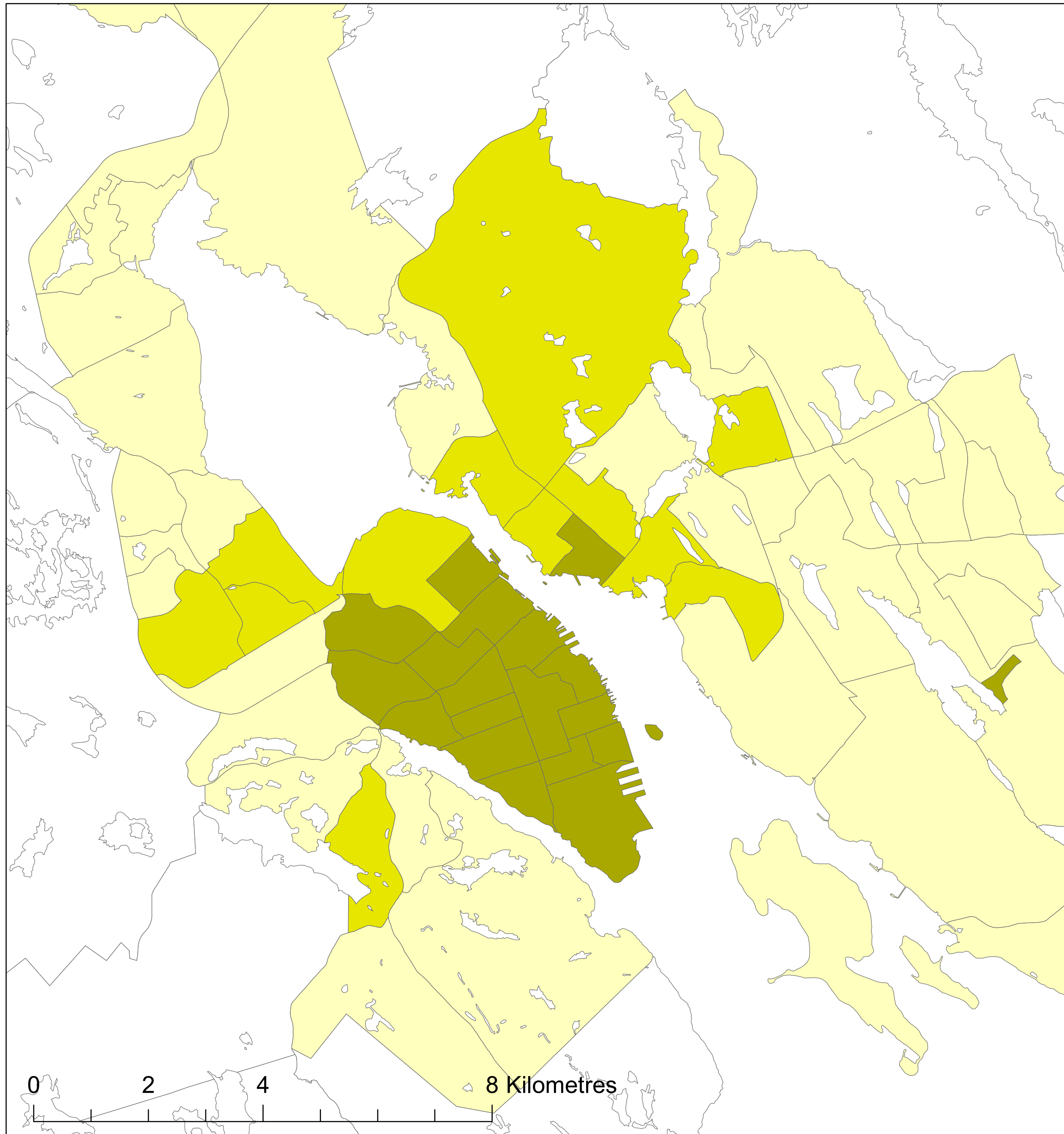
Halifax

Transportation T9 Method

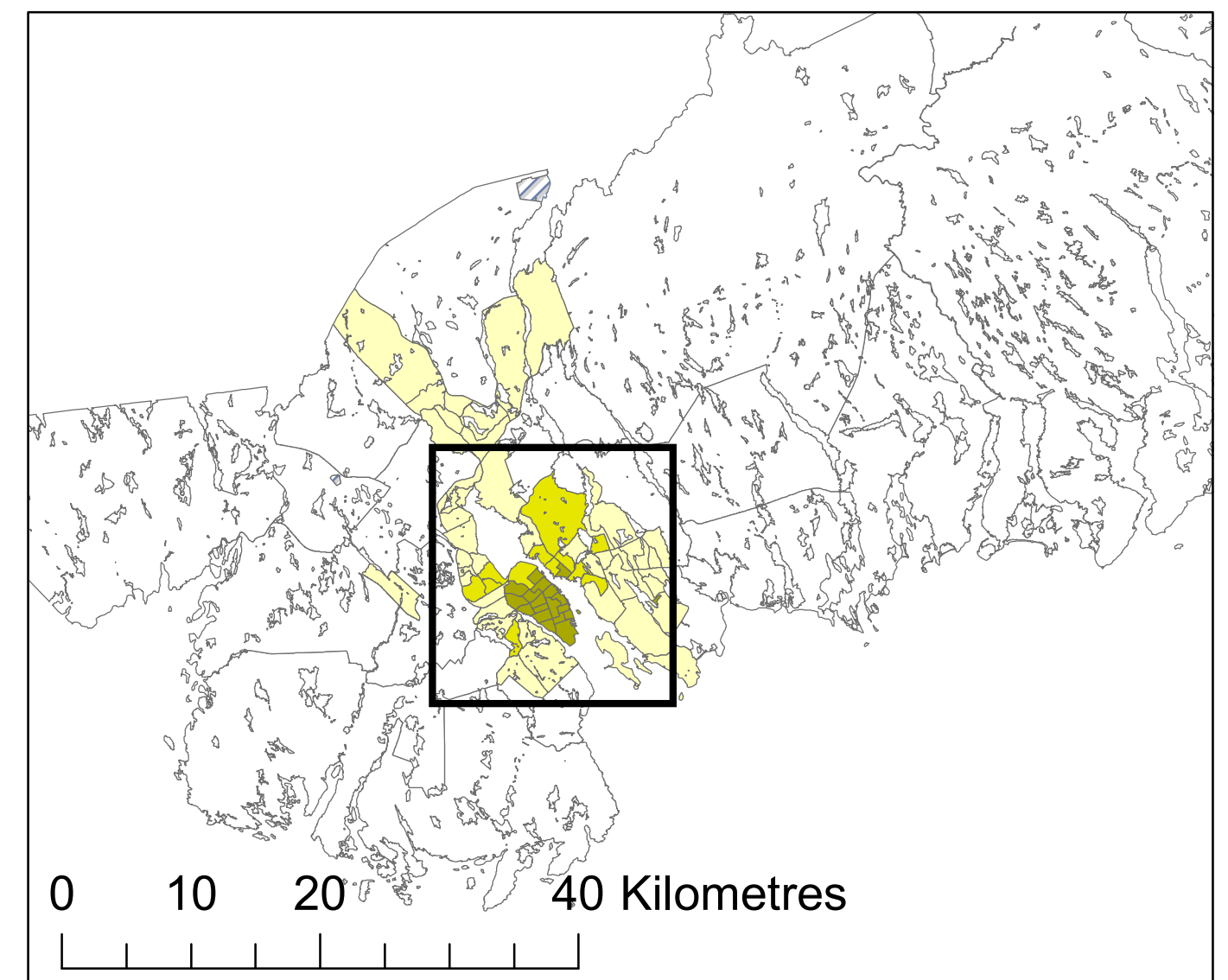
Legend

-  Active Core
-  Transit Suburb
-  Auto Suburb
-  Exurban
-  Unclassified

Active Core: 15%
Transit Suburb: 13%
Auto Suburb: 48%
Exurban: 24%



Census Tracts and Population Data: 2016 Census
Census Tract Classification: 2016



Queen's School of Urban and Regional Planning
Principal Investigator: David Gordon
Research Assistants: Chris Willms & Lyra Hindrichs

