

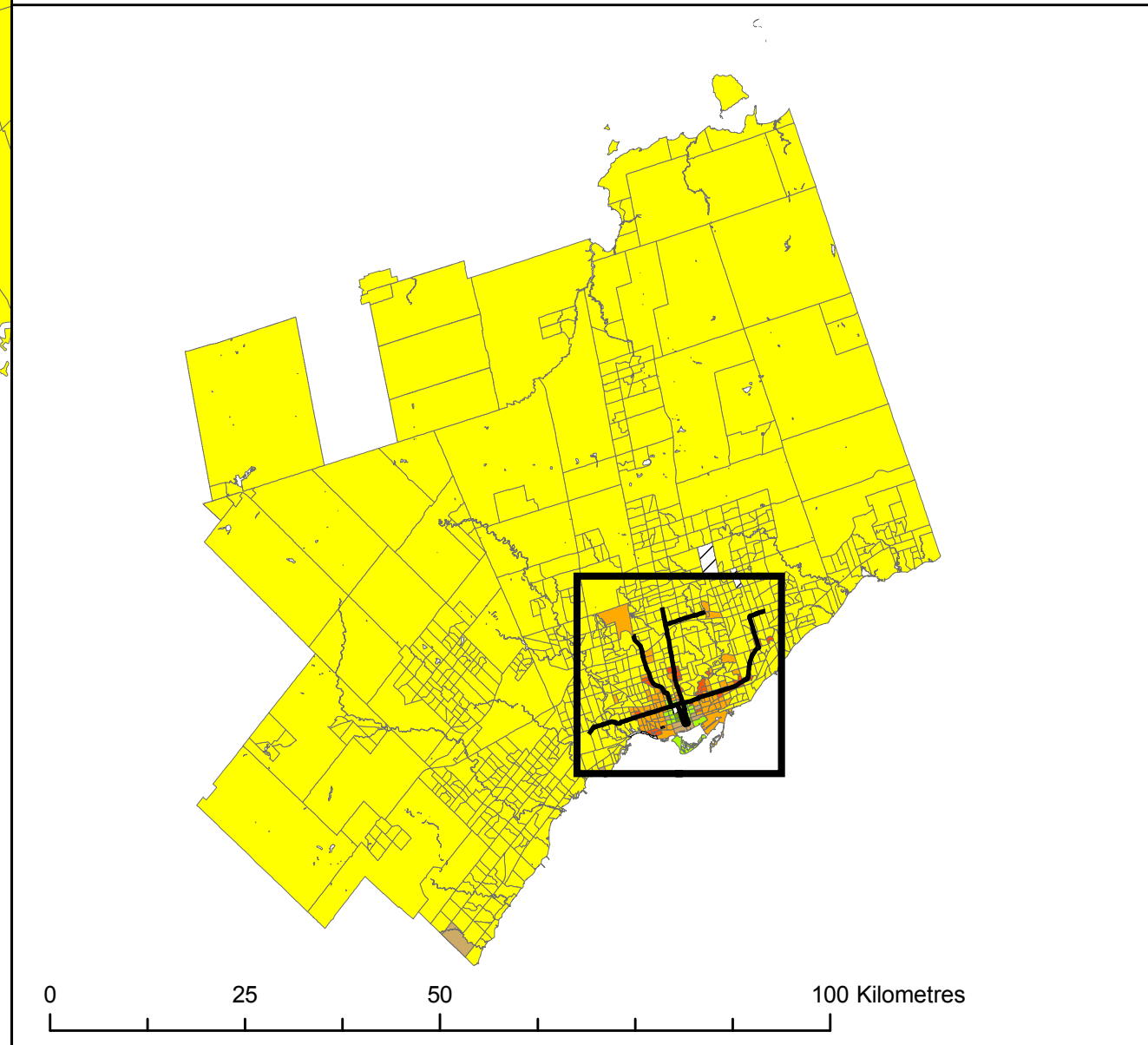
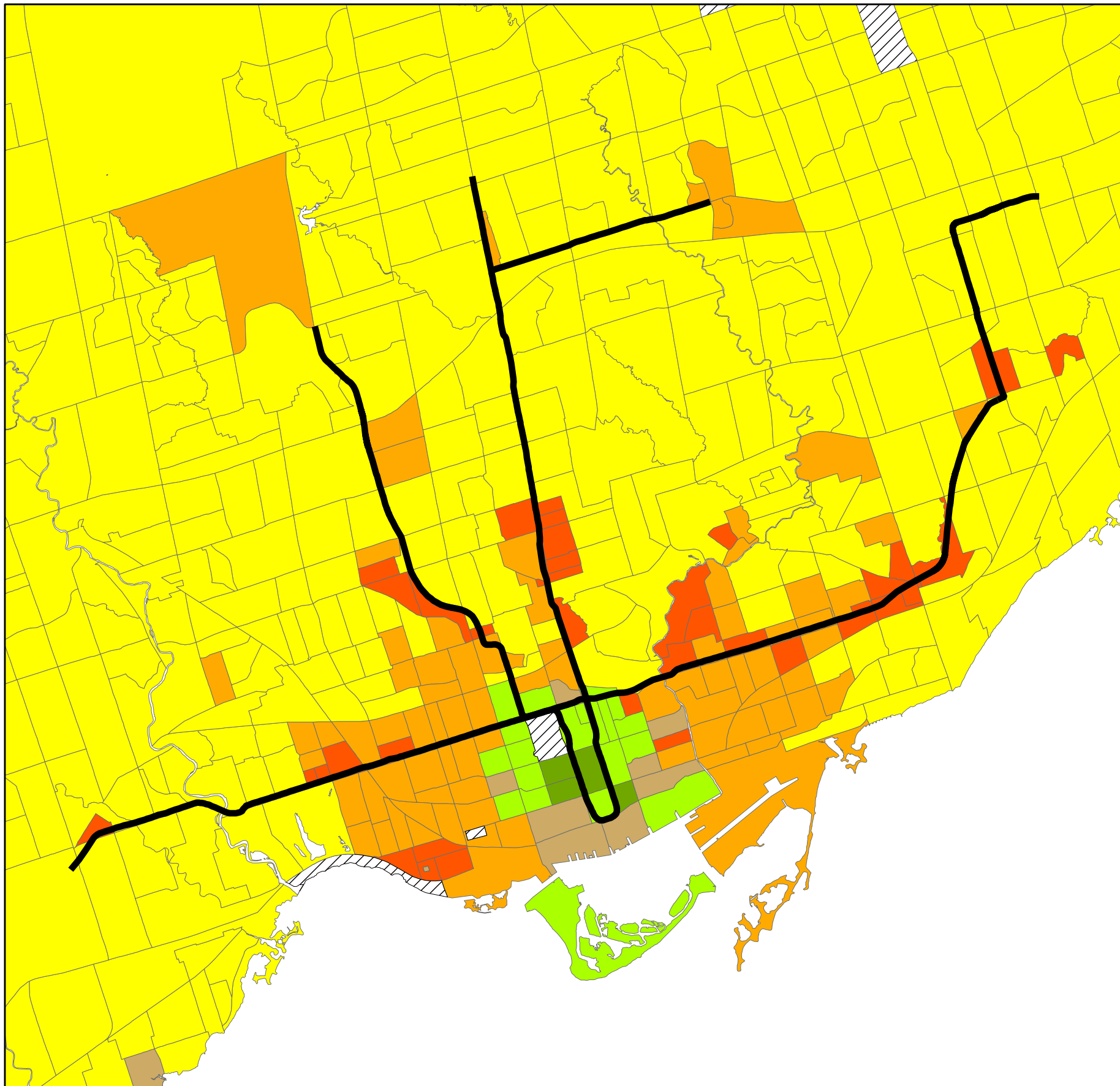
# Toronto

## Journey to Work by Dominant Mode of Transportation

Statistics Canada | 2006 Census

Julien Sabourault, Research Assistant

Queen's University School of Urban and Regional Planning.  
Principal Investigator David Gordon



### Legend

- |                       |  |
|-----------------------|--|
| TTC Rapid Transit     | Predominately Automobile and Public Transit            |
| Active Transportation | Predominately Active Transportation and Public Transit |
| Public Transit        | Predominately Active Transportation and Automobile     |
| Automobile            | Not classified   |