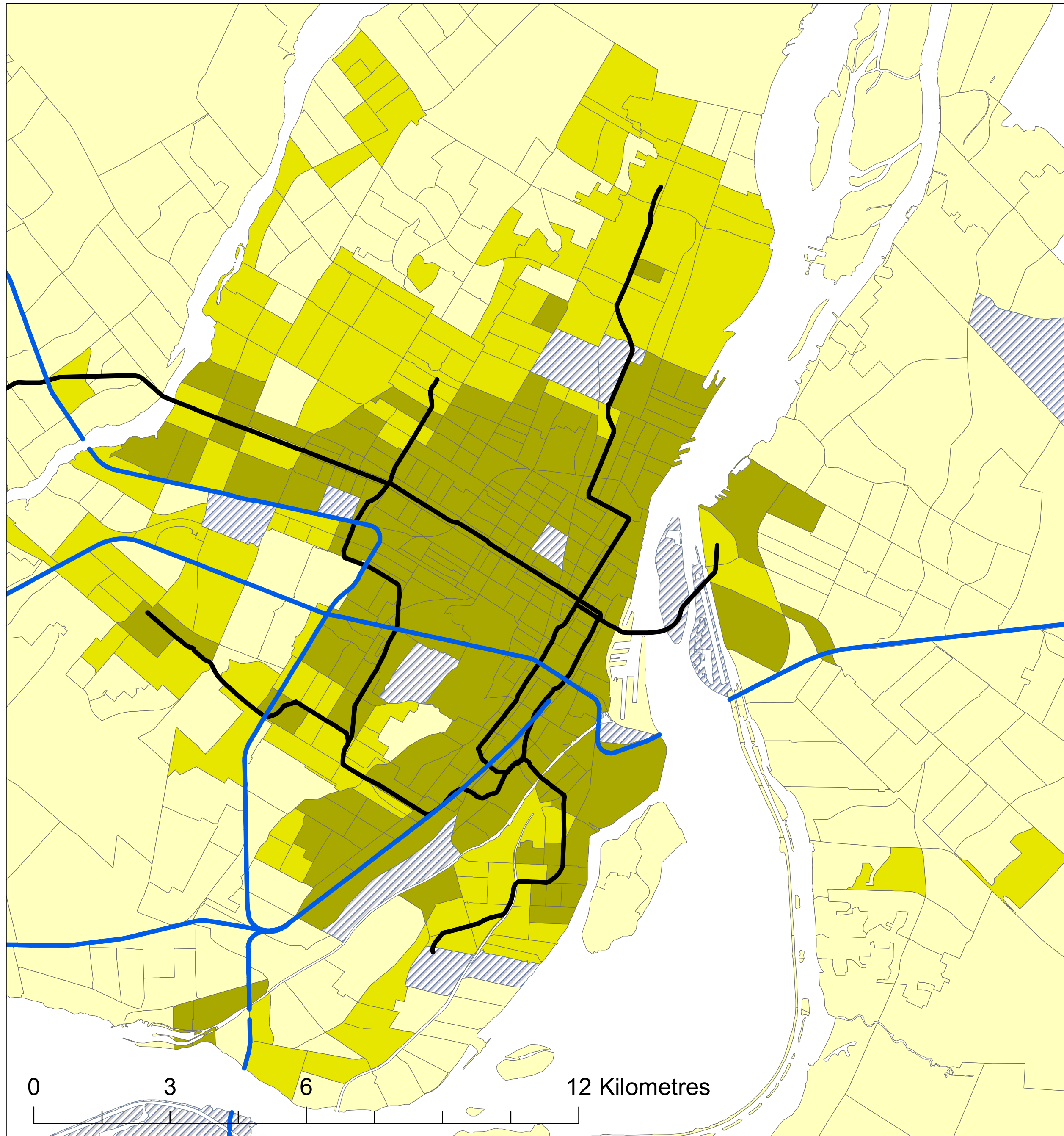


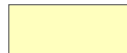






Montréal

Transportation T9 Method

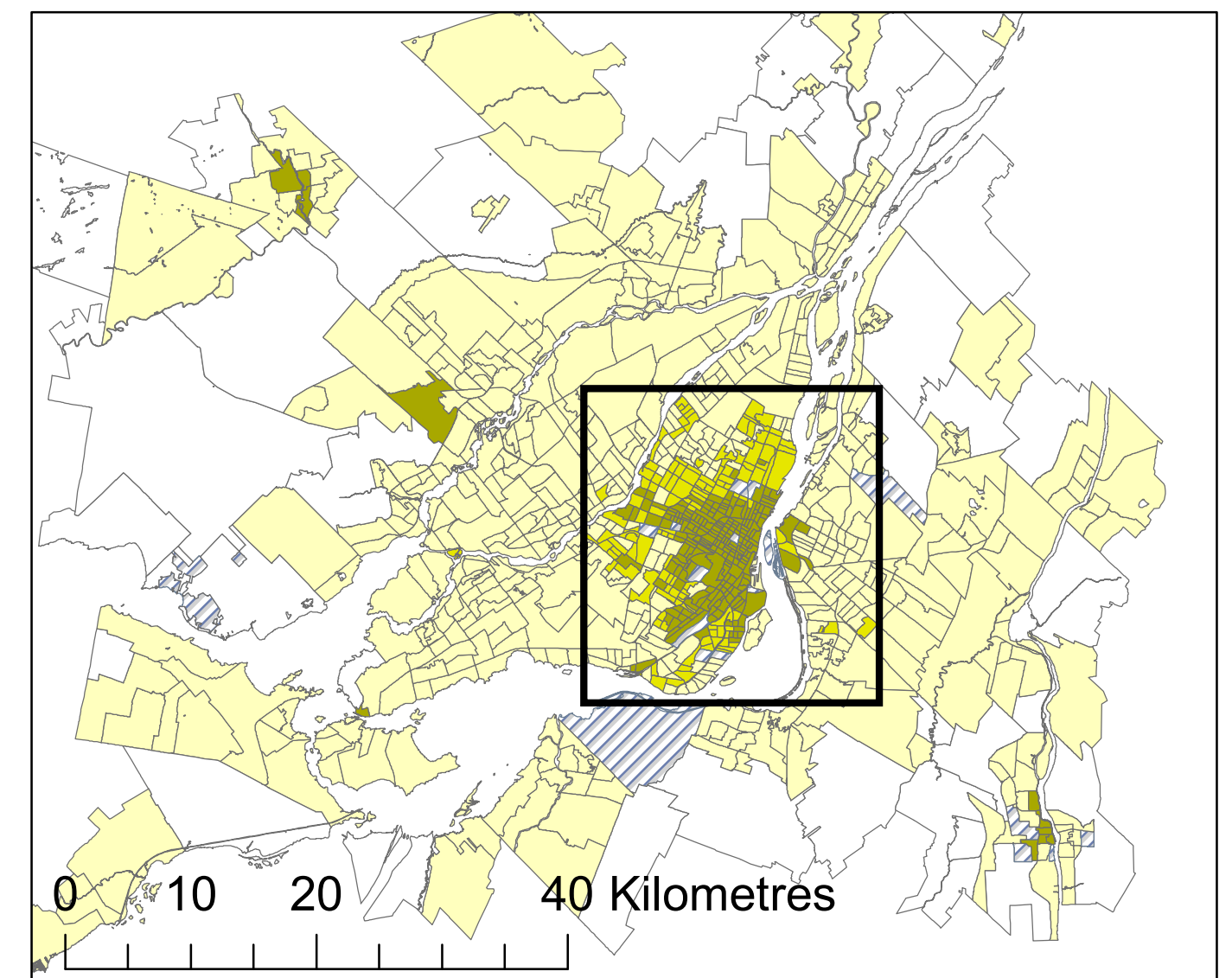


Legend

-  Active Core
-  Transit Suburb
-  Auto Suburb
-  Exurban
-  Unclassified
-  Commuter Rail 2016
-  Metro 2016

Active Core: 17%
Transit Suburb: 14%
Auto Suburb: 66%
Exurban: 3%

Census Tracts and Population Data: 2016 Census
Census Tract Classification: 2016



Queen's School of Urban and Regional Planning
Principal Investigator: David Gordon
Research Assistant: Lyra Hindrichs & Chris Willms

