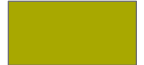

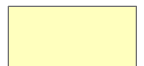



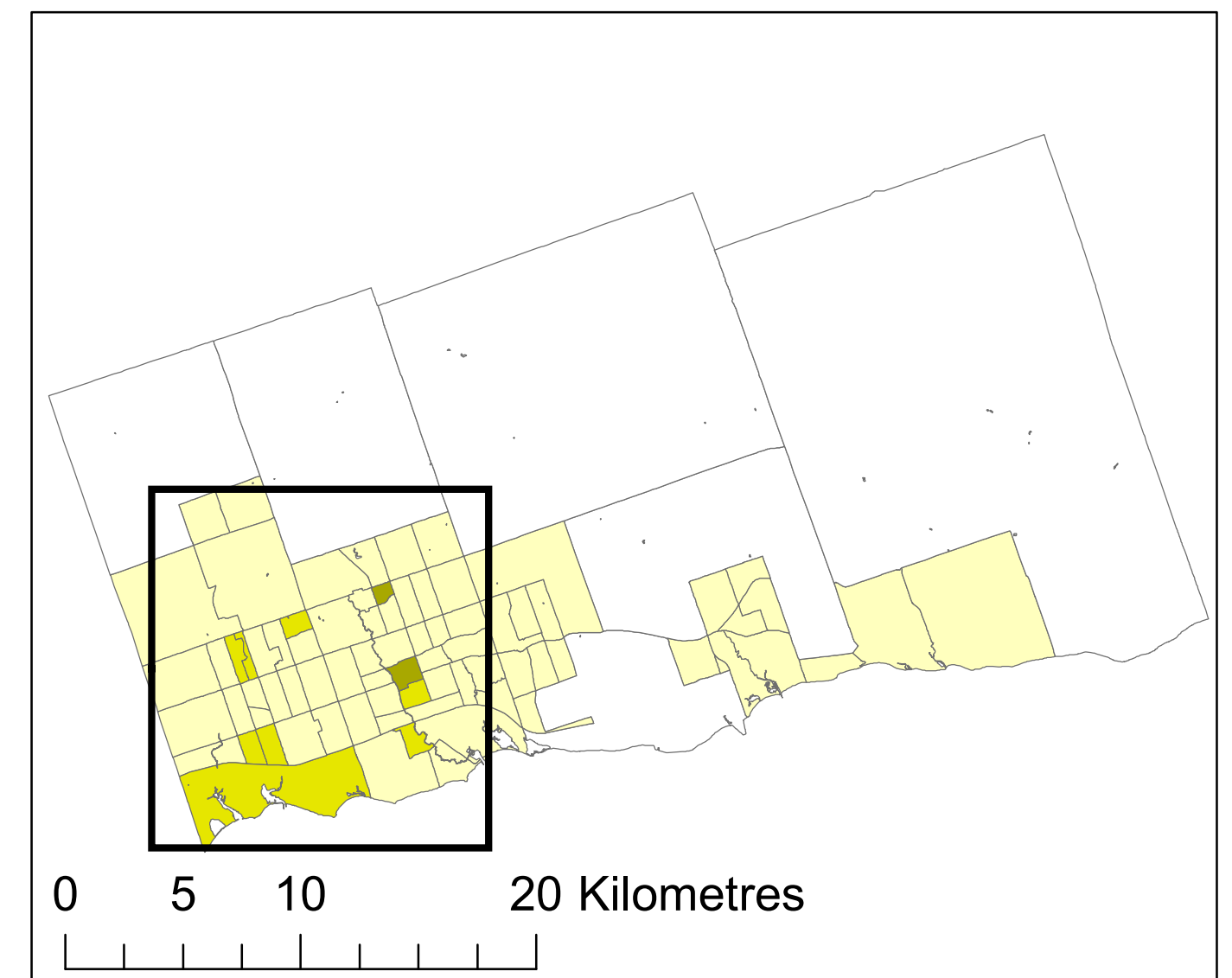
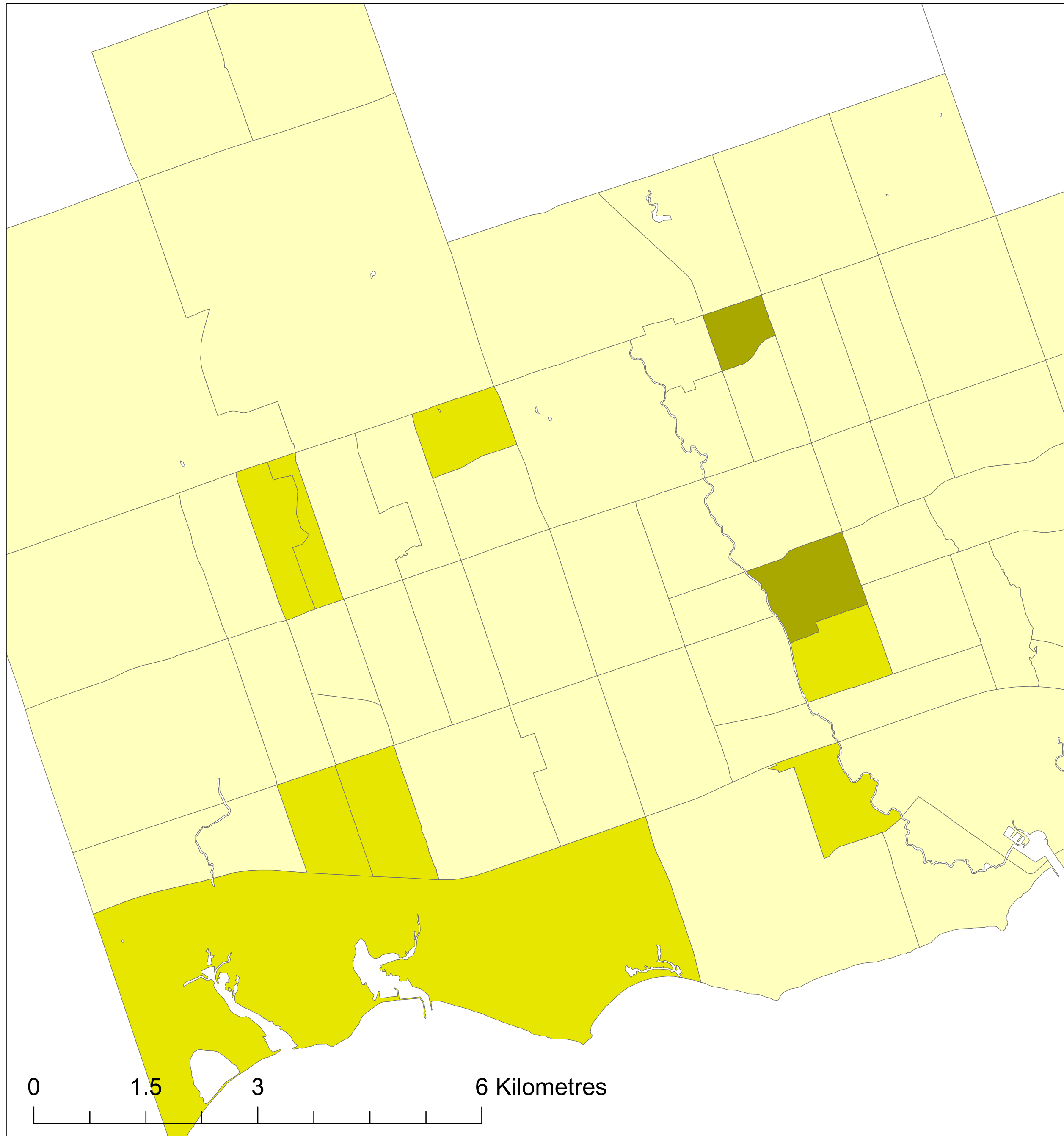
Oshawa

Transportation T9 Method

Legend

| | | |
|---|----------------|--------------------|
|  | Active Core | Active Core: 3% |
|  | Transit Suburb | Transit Suburb: 9% |
|  | Auto Suburb | Auto Suburb: 82% |
|  | Exurban | Exurban: 7% |

Census Tracts and Population Data: 2016 Census
Census Tract Classification: 2016



Queen's School of Urban and Regional Planning
Principal Investigator: David Gordon
Research Assistants: Lyra Hindrichs, Chris Willms,
Ben McCauley & Shuhong Lin

