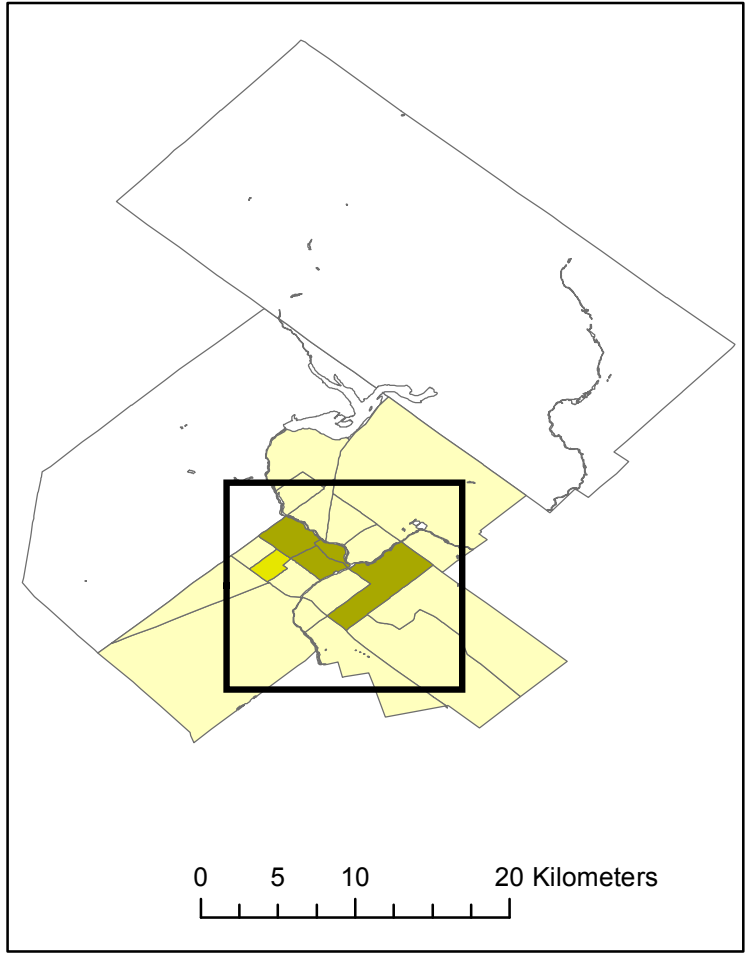
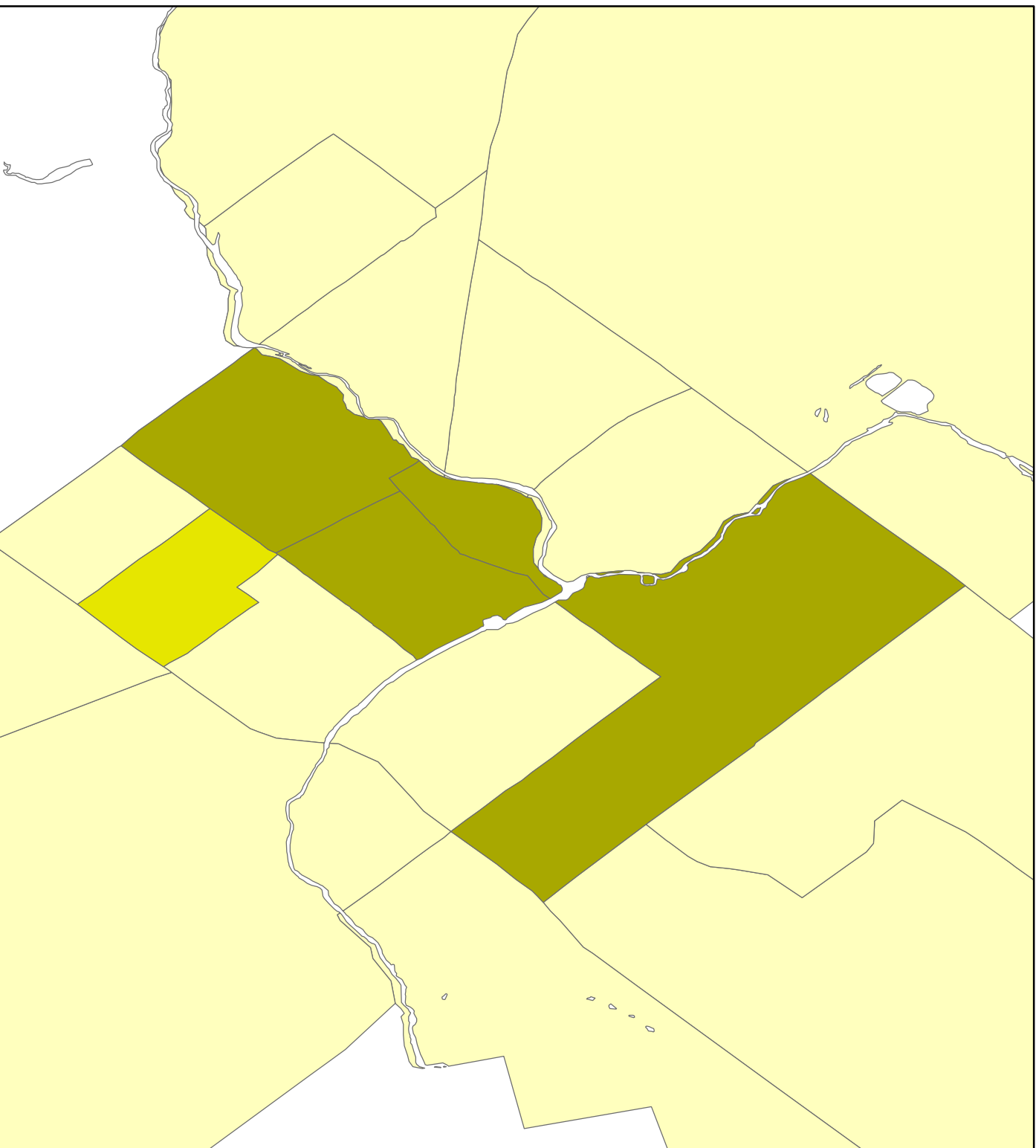


# Guelph

**Legend** Active Core 19%, Suburban 71%, Exurban 10%

- Active Core
  - Transit Supportive Suburb
  - Auto Suburb
  - Exurban
- Density Method D4**  
Statistics Canada | 1996 Census  
Mehdi Bouhadi, Research Assistant



0 5 10 20 Kilometers

0 0.5 1 2 Kilometers

Queen's University School of Urban and Regional Planning.  
Principal Investigator David Gordon

