

Montreal

10.5% Active Core, 86% Suburb, 3.5% Exurban

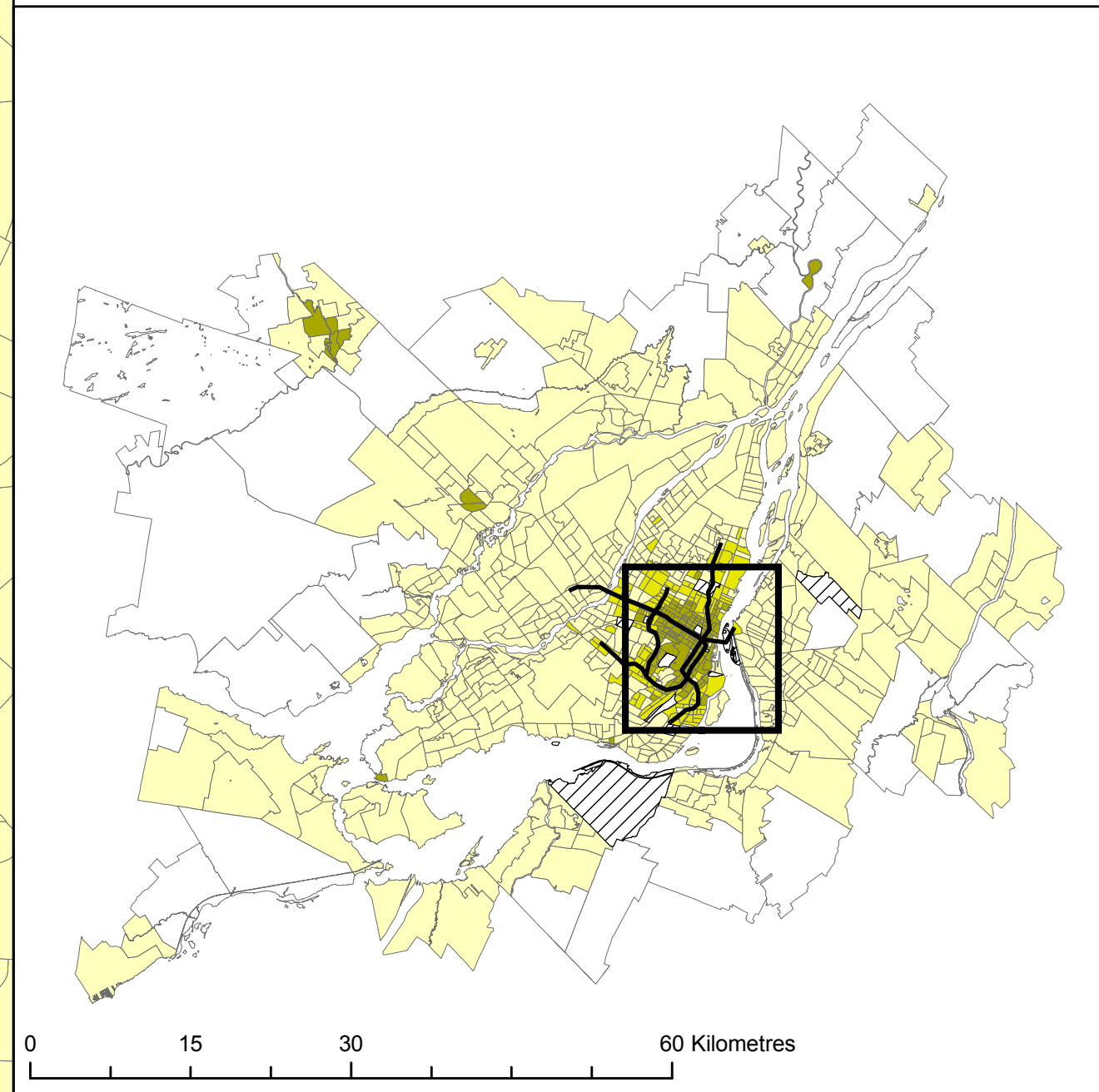
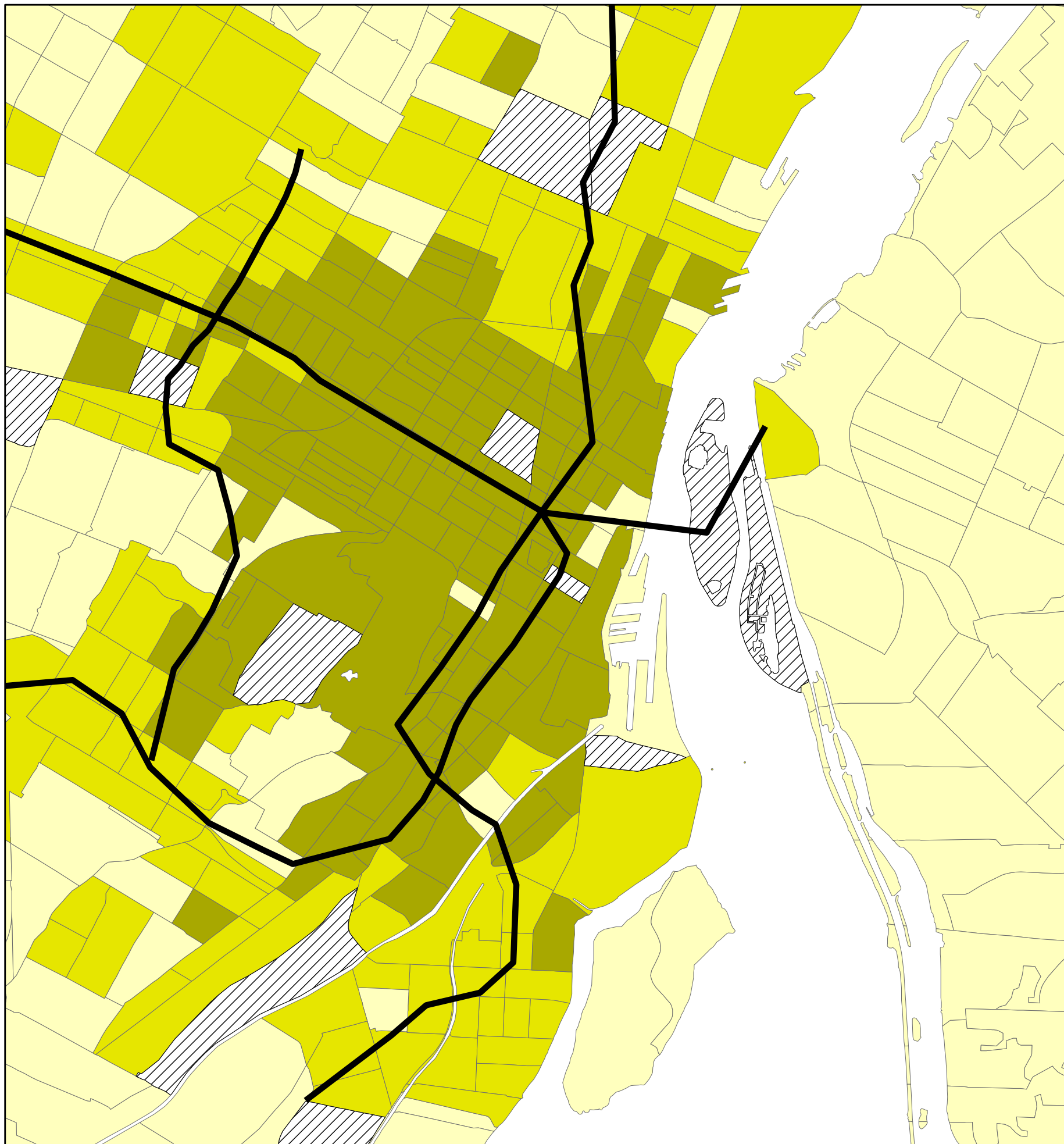
Transportation Method T8

Statistics Canada | 2006 Census

Julien Sabourault, Research Assistant

Legend

- Active Core
- Transit Suburb
- Auto Suburb
- Exurban
- Not classified
- Subway



Queen's University School of Urban and Regional Planning.
Principal Investigator David Gordon

