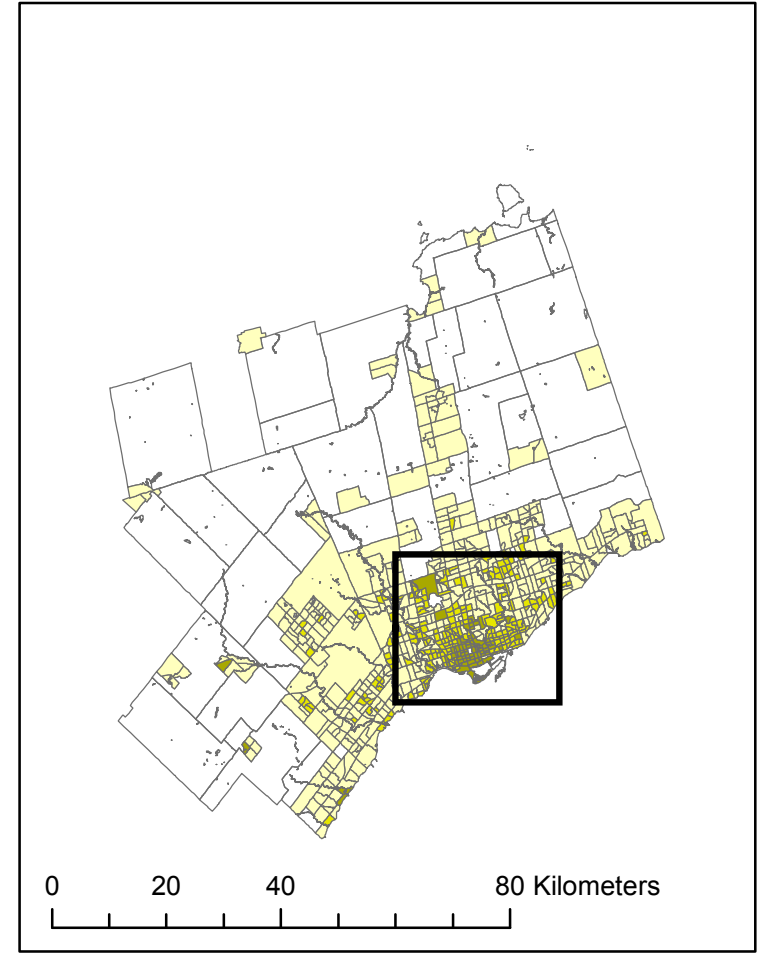
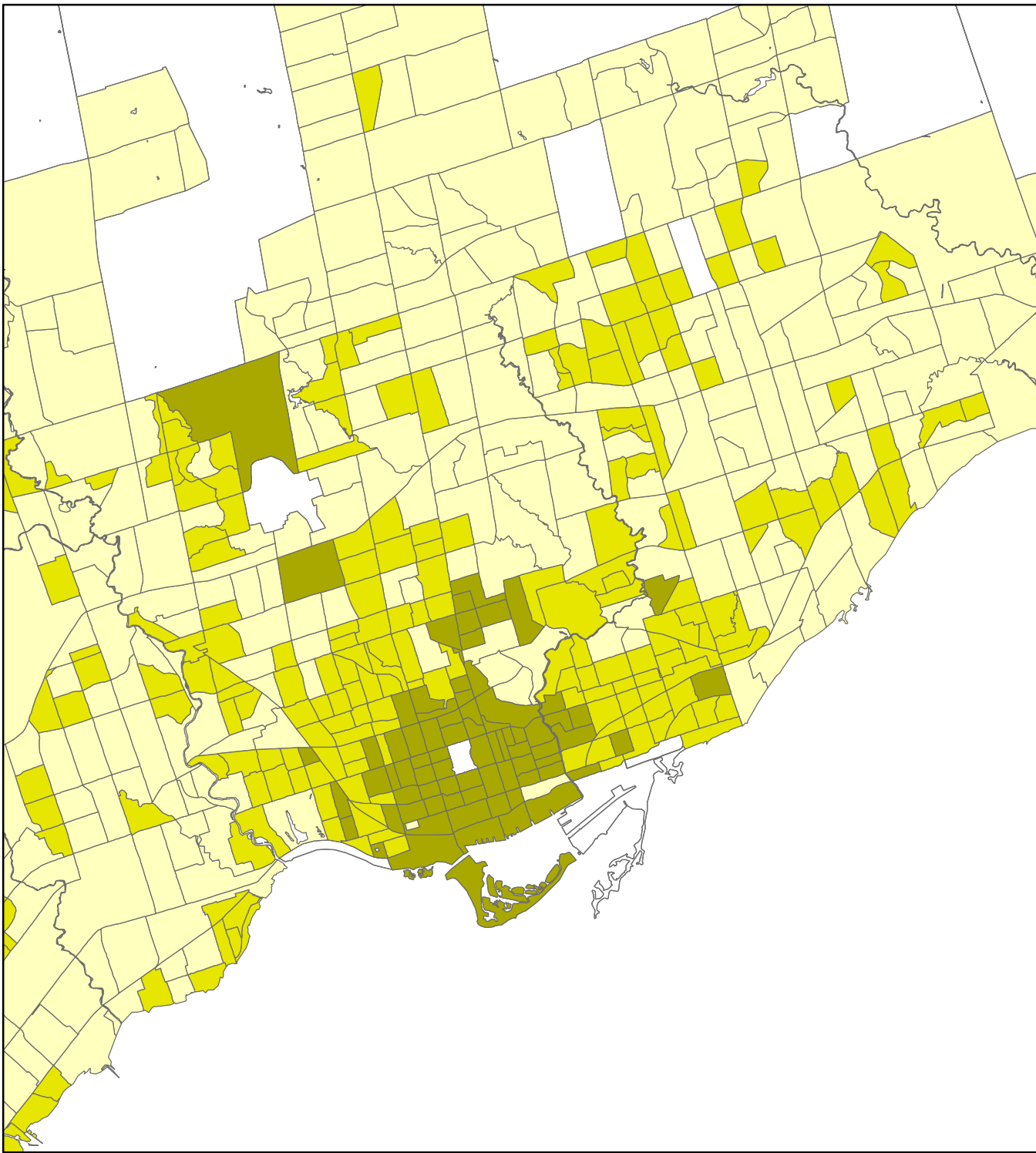


Toronto

Legend Active Core 10%, Suburban 84%, Exurban 6%

- Active Core
 - Transit Supportive Suburb
 - Auto Suburb
 - Exurban
- Density Method D4**
- Statistics Canada | 1996 Census
Sarah Piassetzki, Research Assistant



0 20 40 80 Kilometers

0 3.75 7.5 15 Kilometers

Queen's University School of Urban and Regional Planning.
Principal Investigator David Gordon

