

Trois Rivieres

Legend

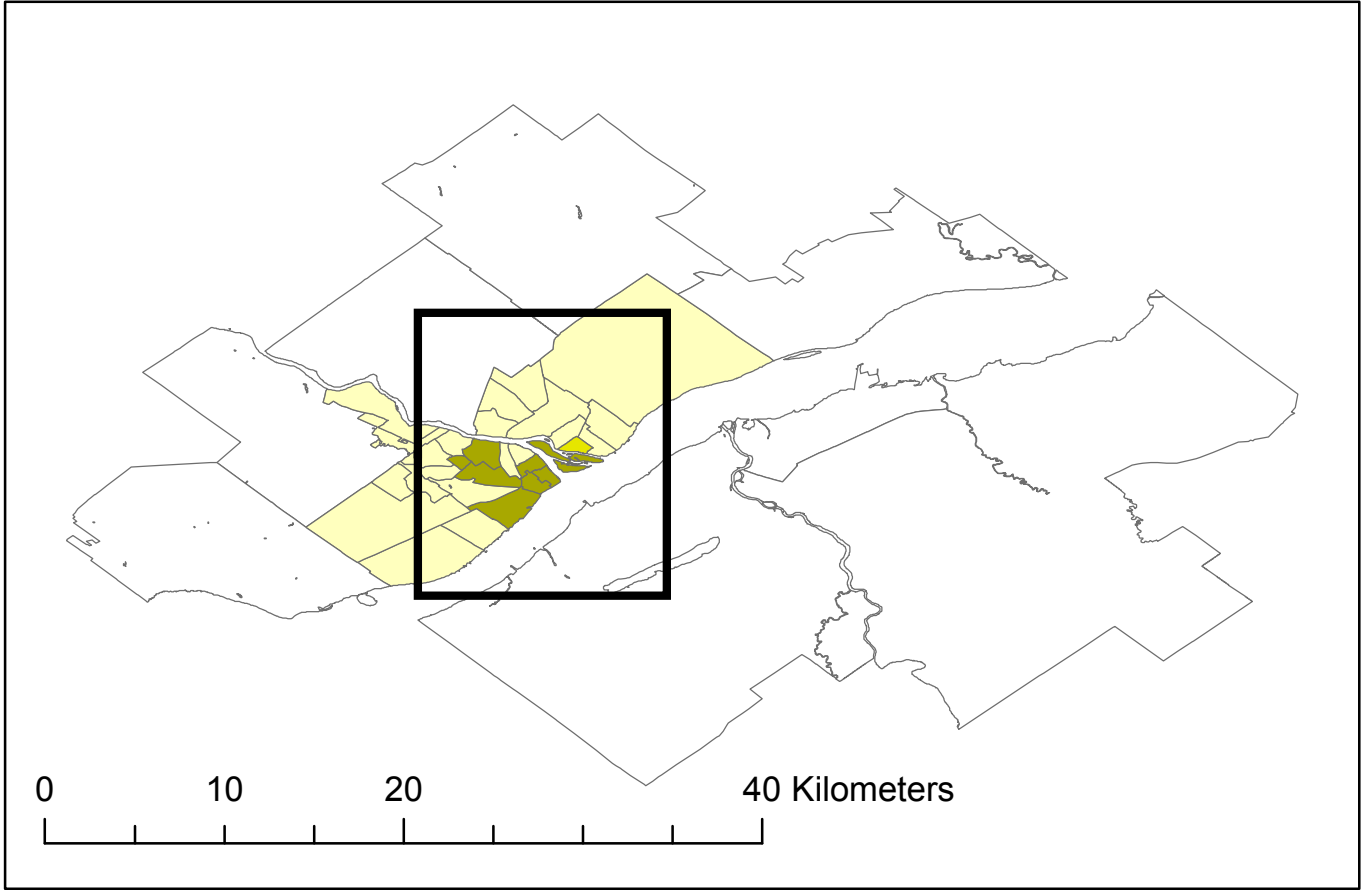
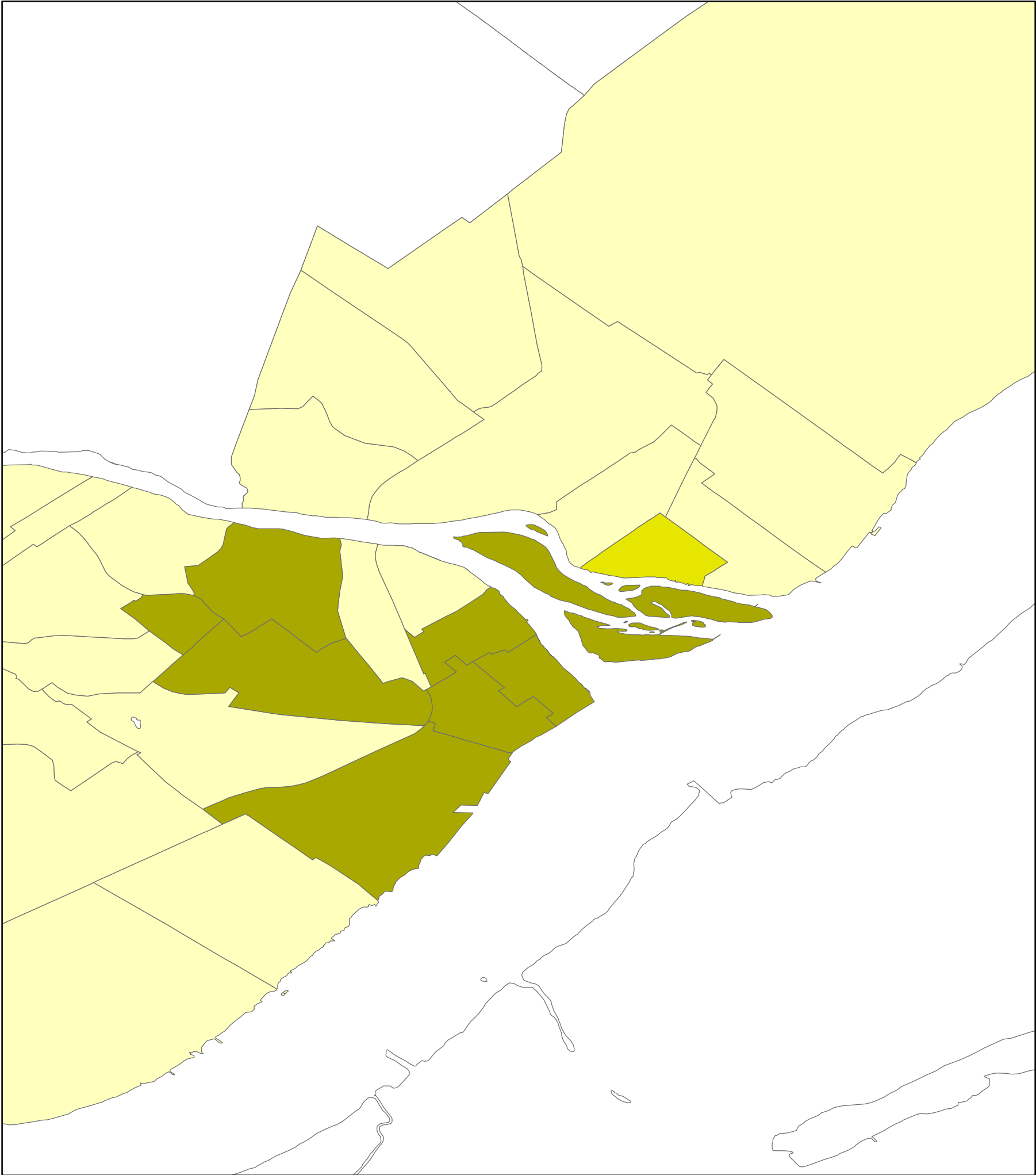
Active Core 13%, Transit Supportive Suburb 2%,
Auto Suburb 63%, Exurban 24%

- Active Core
- Transit Supportive Suburb
- Auto Suburb
- Exurban

Method D4

Statistics Canada 2006

Angus Beaty, Research Assistant



Queen's University School of Urban and Regional Planning.
Principal Investigator David Gordon

